

EXTEND



USER'S GUIDE



METROWALL

OPERATING COMPONENTS



Door Handle:

Designed for the operation of the door panel when the wall is fully extended.

Key Handle:

Slots into the locking mechanism to lock and unlock the folding wall.

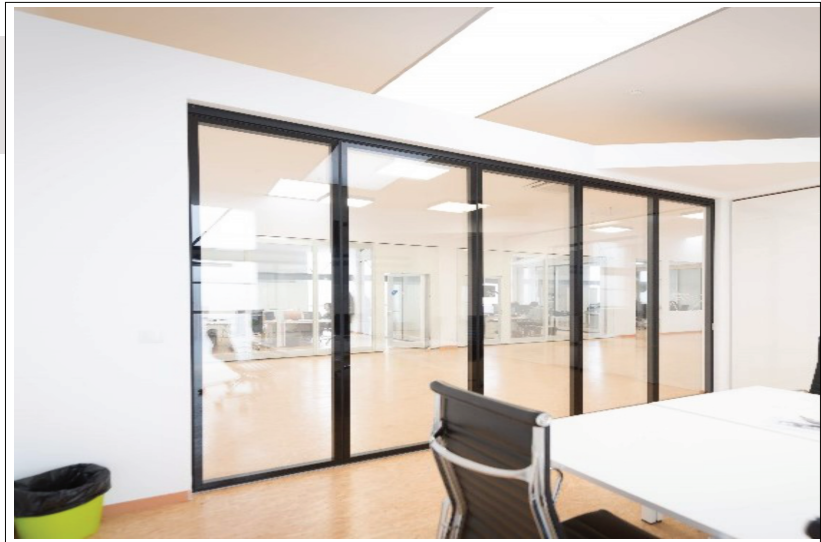


Key Hole:

Hole on the panel that fits the key handle to lock and unlock the folding wall.

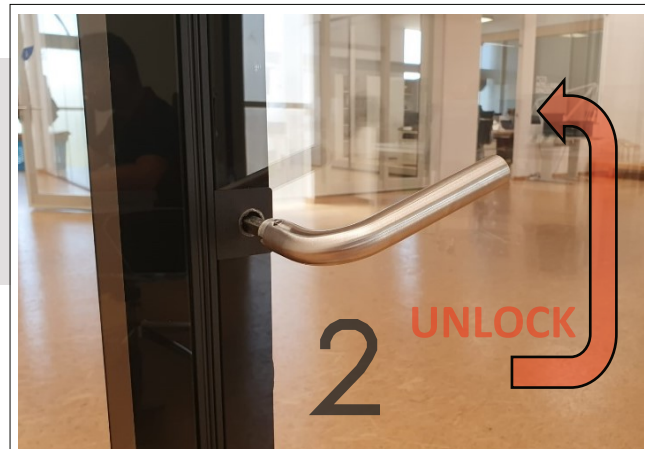
FOLDING THE WALL

Door in unfolded position



Pull the handle to open the door.

Insert the key handle into the key holes on the panels and turn them anticlockwise to unlock the panels.



Push all the panels into a V position.

Grab the door panel with both hands and push it towards the folded position until it looks like the final image.



Final folded position

UNFOLDING THE WALL



Door in folded position

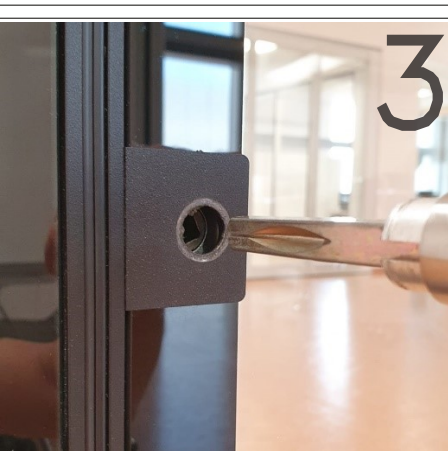
Push the frame of the panels as seen in the image until they're fully extended.



Push the frame as seen in the image on the left until the panels are parallel with the rail.



After this step the wall should look like the image on the right.



Insert the key handle into the key holes on the panels and turn them clockwise to lock the panels in place.

