



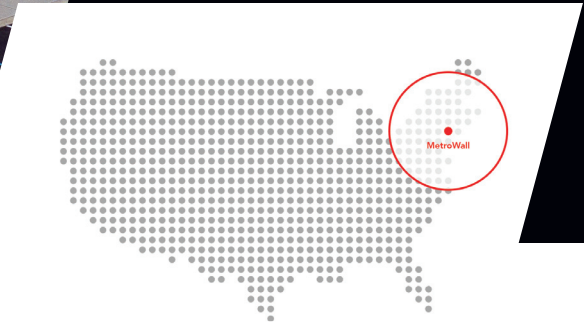
METROWALL®



**MORE IS POSSIBLE**

**REDEFINING** Architectural  
Design & Build Standards





## METROWALL STORY

More Is Possible .....	Page 3
Industry Leader Since 2007 .....	Page 4
Integrated/Proprietary Process .....	Page 5
Satisfaction Guarantee .....	Page 6
Product Innovation and Value .....	Page 7
• DG .....	Page 10-11
• HUSH .....	Page 12-13
• VETRO .....	Page 14-15
• LP .....	Page 16-17
• EXTEND .....	Page 18-19



## MORE IS POSSIBLE

Bold ideas and outcomes that inspire win in today's marketplace. As a leader in architectural glass wall interiors, MetroWall is driven by the ethos "More is Possible". A trusted partner to the Design & Construction communities since 2007, we elevate the human experience by helping create highly functional and inspiring commercial environments that delight clients.

Refusal of the status quo motivates MetroWall to set the standard for client experience, project schedules, and product quality. This is defined by our proprietary, integrated process that removes stress and is what MetroWall has become known for. We manage and assist with all aspects of a project – design, engineering, and installation – allowing us to deliver a frictionless experience.



Industry-best lead times



Personalized customer service & responsiveness



Innovative and value-driven product options



US-based manufacturing quality



Expert installation & aftercare



Precision design models

**MetroWall clients consistently acknowledge our performance with a 96% + Customer Satisfaction Rating and exceptional word of mouth.**





# INDUSTRY LEADER SINCE 2007

MetroWall has grown to become a trusted partner in the buildout of interior spaces because of the relationships we have cultivated with our customers and the positive culture we foster within our team. As a family-owned business, our values permeate everything we do to ensure that all are treated with dignity and respect.



## MISSION

Be the leader for glass wall interiors by setting the standard for client experience, project schedules, and product quality.



## VISION

Be the go-to strategic partner in the buildout of interior space.

# METROWALL LEADERSHIP TEAM



**Jon Scott**  
Founder



**Jared Scott**  
General Manager



**Caleb Scott**  
Technical Manager



**Seth MacGregor**  
Director, Sales & Operations



**Ian MacGregor**  
Director, Business Development



**Bill DiMasi**  
Vice President, Marketing



**Xin Liang**  
Systems & Engineering Manager



**Lucas Subelza**  
Production Manager



**Nicholas Krieger**  
Financial Controller



**Michael Fusco**  
Director, Project Management



# INTEGRATED/PROPRIETARY PROCESS

MetroWall sets the standard for client experience, project schedules, and product quality. Our goal is to reduce friction and stress to make life easier for all stakeholders involved. Our unique process and ability to manage all aspects of a job play a pivotal role in the success of our projects.



Handling the entire process allows us to meet the specific needs of all stakeholders and maintain strong communication, ensuring both project quality and timeliness.

## Stakeholder benefits include:

### Architecture & Design Community

- Team of expert advisors ready to assist with detailed specifications, hardware selections, finish options, ADA and code compliance, project-specified details, budget requirements, and more.
- Precision Revit design models and shop drawings produced quickly.
- Health product declarations available.
- Systems engineered to meet the acoustic demands.

### Landlords & Developers

- Collaboration with all trades.
- Personalized customer service and responsiveness.
- Commitment to the most aggressive project deadlines.
- Extensive product range to meet any functionality, aesthetic, and budget.
- Expert installation and aftercare.

### General Contractors

- Large inventory of US-made products in our NY factory.
- Production and delivery schedules customized.
- Easy-to-read estimates and detailed scope of work provided for every project.
- Technology-driven field data collection translated seamlessly to factory using proprietary software.
- Purpose-built, high-tech factory with digitally integrated CNC and automated cutting equipment.



# SATISFACTION GUARANTEE

MetroWall's process is built around customer satisfaction. Ongoing feedback is a critical component to make sure our customers' needs are continually met and they have a voice in our evolution. Aftercare is also an important part of what we offer. We don't just walk away when the job is done. Our guarantee: We refuse to settle for anything less than complete client satisfaction!

## TRUSTED PARTNER SINCE 2007

 Bell Works

*CORCORAN*

designrepublic

EMPIRE STATE  
REALTY TRUST

FedEx

Gensler

Gilbane



Jägermeister

JBG SMITH

Jet

Northeastern  
University

MANCINI:

SECURITAS

SL GREEN  
REALTY CORP.

The New York Times

TPG Architecture

Turner

VORNADO  
REALTY TRUST

 STRUCTURE TONE

INSPIRED  
BY SOMERSET DEVELOPMENT

*"MetroWall did a great job with project management, making sure that all the dates were lining up so that we could hit those targets. Structure Tone really likes when a partner like MetroWall sits down at the table with us and is as comfortable pushing us as we are pushing them."*

- Michael

*"We needed someone who could get it done right, on budget, and on time that would work within our vision. We wouldn't settle for anything, and they didn't force us to settle. They're a great partner."*

- Ralph

AVISON  
YOUNG

*"It's been a rewarding experience working the MetroWall team. Thank you for being competitive on pricing, responsive to our requests, and for providing a timely, expert installation with a beautiful, finished product."*

- John



## PRODUCT INNOVATION & VALUE

MetroWall's Research & Development team has a focused approach when identifying new product lines and features. It always starts with listening to customer needs and understanding the root cause of their pain points to ensure that we develop products that "scratch the customer itch". The R&D team also spends a great deal of time assessing trends to identify how we can innovate and fill a gap in the market. As we identify these needs and opportunities, the MetroWall team begins analyzing the problem. We then go through a rigorous process before bringing a new idea or innovations to market.

This includes:



Data collection



Product design



Product validation



Product revisions

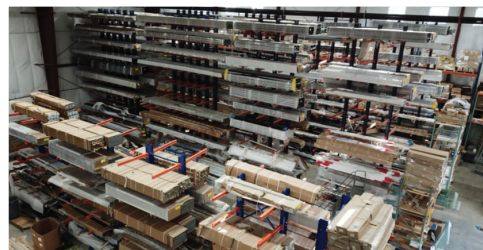


Product trial



Data analysis & reporting

The products in our portfolio are designed to provide significant value, achieve a desired aesthetic, meet acoustic standards, achieve safety and ADA compliance standards, and meet sustainability requirements.



# DG

High Acoustic Performer



# HUSH

Simplicity Meets Acoustics





## VETRO

Modern Aesthetic  
with Broad Options



## LP

Minimalism with  
Big Impact



## EXTEND

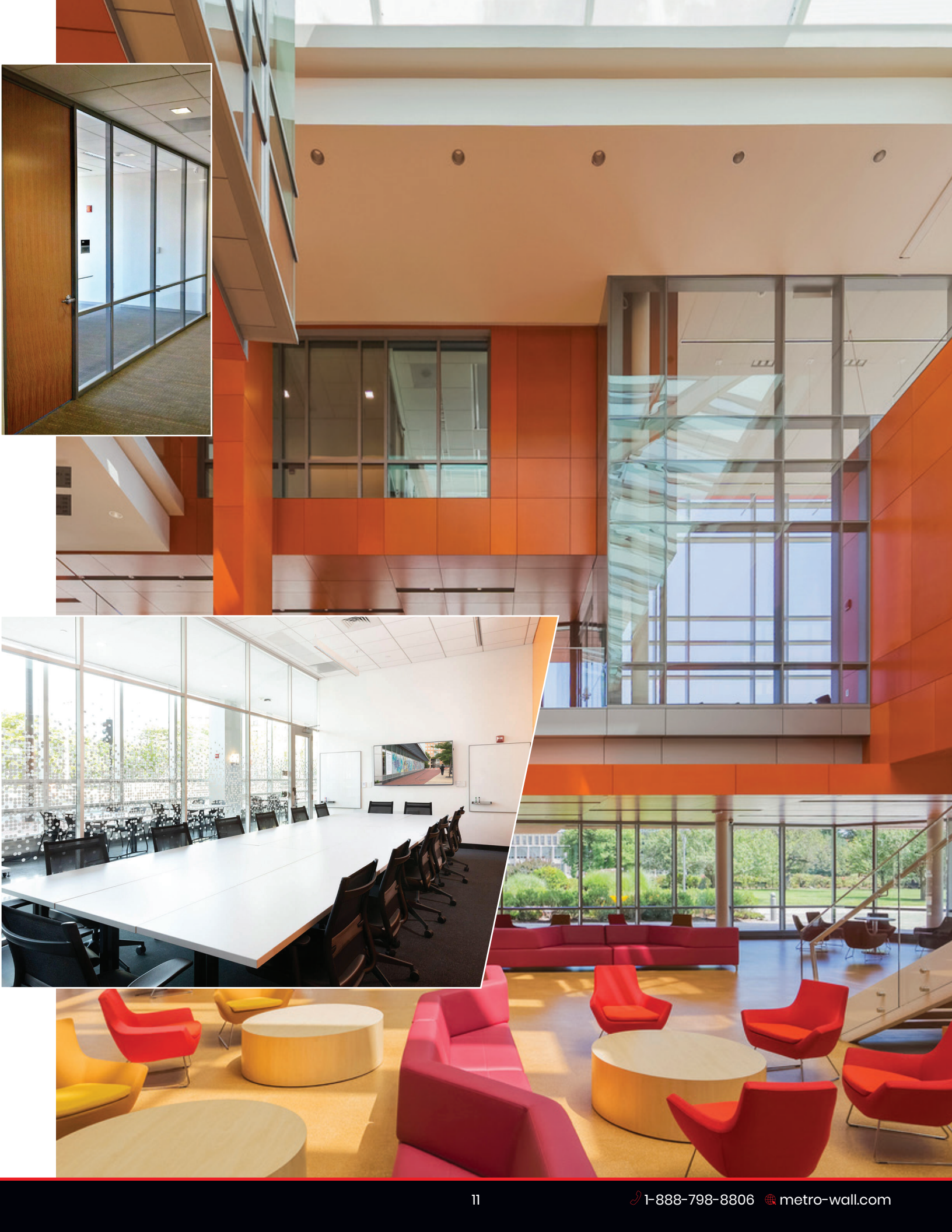
The Solution  
for Flexibility



# DG SERIES

**THE DG SERIES** excels in applications that require increased sound privacy. This system boasts numerous design options and can accommodate any configuration of double glazing, single glazing, solid panels, and open spaces. Single- and double-glazed doors are available and true horizontal mullions allow for increased maximum height and nearly endless flexibility.

Product	DG Series
Benefit/Value	<b>HIGH ACOUSTIC PERFORMER</b>
Features	<ul style="list-style-type: none"> <li>• Perfect solution for applications requiring high acoustic performance</li> <li>• Vast array of aesthetic and function options for doors</li> <li>• Accommodates single or double glazing</li> <li>• Accommodation for 3/8" and 1/2" glass</li> <li>• Clear tempered, low iron, annealed laminated, tempered laminated, acoustic laminated, and specialty glass available</li> <li>• True vertical (standard) and horizontal mullions (custom) available</li> <li>• Accommodates custom hardware choices</li> <li>• Lab-tested acoustic performance</li> <li>• Highly customizable</li> </ul>
Acoustics	<ul style="list-style-type: none"> <li>• Acoustic gaskets strategically integrated to provide the highest possible acoustic performance</li> <li>• STC ratings up to 48</li> </ul>
Accessibility	<ul style="list-style-type: none"> <li>• ADA compliant door clearances, surfaces, and hardware</li> </ul>
Sustainability	<ul style="list-style-type: none"> <li>• Multiple LEED contributions</li> <li>• Product HPD available</li> <li>• Recycling options available</li> </ul>
Dimensions	<ul style="list-style-type: none"> <li>• Frame profile width: 3 1/8" (alternate options available)</li> <li>• Frame profile height: 1 3/4" (alternate options available)</li> <li>• Wall height up to 12' (10' standard, transom to reach 12')</li> <li>• No floor leveling required</li> </ul>
Lead Time	<ul style="list-style-type: none"> <li>• Production and delivery customized to align with project schedules</li> <li>• 3-week standard lead time</li> </ul>
Finishes	<ul style="list-style-type: none"> <li>• Matte black and clear anodized finishes in stock</li> <li>• Custom powder coat and other specialty finishes available</li> </ul>
Glass Joints	<ul style="list-style-type: none"> <li>• Multiple choices including polycarbonate co-extrusions, MetroWall proprietary extruded aluminum mullions with integrated seal and hi-bond tape</li> </ul>
Construction	<ul style="list-style-type: none"> <li>• Architectural-grade aluminum alloys</li> <li>• 100% domestically sourced aluminum and glass</li> <li>• Seamlessly integrates with standard building construction</li> </ul>



# HUSH SERIES

**THE HUSH SERIES** meets the sound privacy requirements coveted by many, while also providing the simplicity that fits seamlessly into bold, modern designs. The Hush is a double-glazed system with butt-glazed glass panes that boasts numerous design options. The system provides the flexibility to be single-glazed, face-glazed, and double-glazed. The Hush system is at the crossroads where simplicity meets acoustics.

Product	Hush Series
Benefit/Value	<b>SIMPLICITY MEETS ACOUSTICS</b>
Features	<ul style="list-style-type: none"> <li>• Perfect solution for applications requiring high acoustic performance</li> <li>• Vast array of aesthetic and function options for doors</li> <li>• Flexibility to be single-glazed, face-glazed, and double-glazed</li> <li>• Accommodates 1/2" glass</li> <li>• Clear tempered, low iron, annealed laminated, tempered laminated, acoustic laminated, and specialty glass available</li> <li>• True vertical and horizontal mullions available</li> <li>• Accommodates custom hardware choices</li> <li>• Lab-tested acoustic performance</li> <li>• Highly customizable</li> </ul>
Acoustics	<ul style="list-style-type: none"> <li>• Acoustic gaskets strategically integrated to provide the highest possible acoustic performance</li> <li>• STC ratings up to 50</li> </ul>
Accessibility	<ul style="list-style-type: none"> <li>• ADA compliant door clearances, surfaces, and hardware</li> </ul>
Sustainability	<ul style="list-style-type: none"> <li>• Multiple LEED contributions</li> <li>• Product HPD available</li> <li>• Recycling options available</li> </ul>
Dimensions	<ul style="list-style-type: none"> <li>• Frame profile width: 3 1/8" (alternate options available)</li> <li>• Frame profile height: 1 3/4" (alternate options available)</li> <li>• Wall height up to 10'</li> <li>• No floor leveling required</li> </ul>
Lead Time	<ul style="list-style-type: none"> <li>• Production and delivery customized to align with project schedules</li> <li>• 3-week standard lead time</li> </ul>
Finishes	<ul style="list-style-type: none"> <li>• Matte black and clear anodized finishes in stock</li> <li>• Custom powder coat and other specialty finishes available</li> </ul>
Glass Joints	<ul style="list-style-type: none"> <li>• Multiple choices including polycarbonate co-extrusions, MetroWall proprietary extruded aluminum mullions with integrated seal and hi-bond tape</li> </ul>
Construction	<ul style="list-style-type: none"> <li>• Architectural-grade aluminum alloys</li> <li>• 100% domestically sourced aluminum and glass</li> <li>• Seamlessly integrates with standard building construction</li> </ul>



# VETRO SERIES

**THE VETRO SERIES** strikes the perfect balance between simplicity and customizability while offering tangible value to all project stakeholders. Architects and designers appreciate the broad range of options and modern aesthetic. Contractors and developers applaud the competitive pricing, ease of installation, and fast lead times. Landlords and tenants alike are drawn to the design, functionality, and warranty. Vetro truly offers something for everyone.

Product	Vetro Series
Benefit/Value	<b>MODERN AESTHETIC WITH BROAD OPTIONS</b>
Features	<ul style="list-style-type: none"> <li>• Perfect balance of adjustability and aesthetics</li> <li>• Vast array of aesthetic and function options for doors</li> <li>• Symmetrical center glazed design</li> <li>• Accommodation for 3/8", 1/2" and 5/8" glass</li> <li>• Clear tempered, low iron, annealed laminated, tempered laminated, acoustic laminated, and specialty glass available</li> <li>• Vertical and horizontal mullions available</li> <li>• Accommodates virtually endless custom hardware choices</li> <li>• Wood doors, glass doors, pivot doors, butt-hinged doors, top/ bottom closer options, sliding door, and much more</li> <li>• Highly customizable</li> </ul>
Acoustics	<ul style="list-style-type: none"> <li>• Acoustic gaskets strategically integrated to provide the highest possible acoustic performance</li> <li>• Sound transmission class varies based on several factors including glass type, door selection, site conditions, etc. - 39+ STC rating</li> </ul>
Accessibility	<ul style="list-style-type: none"> <li>• ADA compliant door clearances, surfaces, and hardware</li> </ul>
Sustainability	<ul style="list-style-type: none"> <li>• Multiple LEED contributions</li> <li>• Product HPD available</li> <li>• Recycling options available</li> </ul>
Dimensions	<ul style="list-style-type: none"> <li>• Frame profile width: 2 1/2" (alternate options available)</li> <li>• Frame profile height: 1 3/4" + adjustable reveal</li> <li>• Wall height up to 10'</li> <li>• Installation tolerance +/- 1/4"</li> <li>• No floor leveling required</li> </ul>
Lead Time	<ul style="list-style-type: none"> <li>• Production and delivery customized to align with project schedules</li> <li>• 3-week standard lead time</li> </ul>
Finishes	<ul style="list-style-type: none"> <li>• Matte black and clear anodized finishes in stock</li> <li>• Custom powder coat and other specialty finishes available</li> </ul>
Glass Joints	<ul style="list-style-type: none"> <li>• Multiple choices including polycarbonate co-extrusions, MetroWall proprietary extruded aluminum mullions with integrated seal and hi-bond tape</li> </ul>
Construction	<ul style="list-style-type: none"> <li>• Architectural-grade aluminum alloys</li> <li>• 100% domestically sourced aluminum and glass</li> <li>• Seamlessly integrates with standard building construction</li> </ul>



# LP SERIES

**THE LP SERIES** is minimalism without compromise. The LP Series offers one of the smallest bottom profiles in the industry but performs big. With a vast array of options including low profile doorframes, pivot doors, sliding doors, ladder pulls, and leversets, the LP Series can meet your design intent without sacrificing performance. The LP Series has become the wall solution of choice for many architects, contractors, landlords, and tenants.

Product	LP Series
Benefit/Value	<b>MINIMALISM WITH BIG IMPACT</b>
Features	<ul style="list-style-type: none"> <li>• Minimal profile dimensions</li> <li>• Multiple door options including optional vertical doorframes</li> <li>• Accommodation for 3/8" and 1/2" glass</li> <li>• Clear tempered, low iron, annealed laminated, tempered laminated, acoustic laminated, and specialty glass available</li> <li>• Accommodates wide array of hardware choices including ladder pulls and leversets</li> <li>• Pivot doors, sliding doors, overhead closers, floor closers, and much more</li> <li>• Great solution for suite entrance doors, sidelites, clerestory windows, and more, in addition to full glass walls</li> </ul>
Acoustics	<ul style="list-style-type: none"> <li>• Acoustic gaskets strategically integrated to provide the highest possible acoustic performance</li> <li>• Sound transmission class varies based on several factors including glass type, door selection, site conditions, etc. - 36+ STC rating</li> </ul>
Accessibility	<ul style="list-style-type: none"> <li>• ADA compliant door clearances, surfaces, and hardware</li> </ul>
Sustainability	<ul style="list-style-type: none"> <li>• Multiple LEED contributions</li> <li>• Product HPD available</li> <li>• Recycling options available</li> </ul>
Dimensions	<ul style="list-style-type: none"> <li>• Frame profile width: Bottom: 7/8" Top: 1 1/4" (alternate options available)</li> <li>• Frame profile height: Bottom: 3/4" (alternate options available) Top: 1 3/4"</li> </ul>
Lead Time	<ul style="list-style-type: none"> <li>• Production and delivery customized to align with project schedules</li> <li>• 3-week standard lead time</li> </ul>
Finishes	<ul style="list-style-type: none"> <li>• Matte black and clear anodized finishes in stock</li> <li>• Custom powder coat and other specialty finishes available</li> </ul>
Glass Joints	<ul style="list-style-type: none"> <li>• Multiple choices including polycarbonate co-extrusions, MetroWall proprietary extruded aluminum mullions with integrated seal and hi-bond tape</li> </ul>
Construction	<ul style="list-style-type: none"> <li>• Architectural-grade aluminum alloys</li> <li>• 100% domestically sourced aluminum and glass</li> <li>• Seamlessly integrates with standard building construction</li> </ul>





# EXTEND SERIES

**THE EXTEND SERIES** was developed in response to market needs to segment spaces, taking into consideration a high aesthetic sense. Innovative and minimalist, EXTEND is a wall with enclosed hinges, which is simple to install, ensuring space isolation and fast parking. The EXTEND Series was designed with a floor track, having the wall weight totally supported by it. There is no need to hire an engineer or include steel structure above. Extend hinges are hidden. It is one of the outstanding aesthetic points in the development of the wall and is highly sought after by architects and designers.

Product	Extend Series
Benefit/Value	<b>THE SOLUTION FOR FLEXIBILITY</b>
Features	EXTEND Floor Track <ul style="list-style-type: none"> <li>• Manual operation</li> <li>• Ceiling telescopic track, adaptable to different spaces</li> <li>• Available in a wide range of surface finish options</li> <li>• Floor supporting system</li> <li>• Panel closing system</li> <li>• Including pass door panels and glazing</li> <li>• High aesthetic wall</li> <li>• Hidden hinges</li> </ul>
Acoustics	<ul style="list-style-type: none"> <li>• Acoustic gaskets strategically integrated to provide the highest possible acoustic performance</li> <li>• Rating dB (RW) 42-43</li> <li>• Sound transmission class varies based on several factors including glass type, door selection, site conditions, etc. - 36+ STC rating</li> </ul>
Accessibility	<ul style="list-style-type: none"> <li>• ADA compliant door clearances, surfaces, and hardware</li> </ul>
Sustainability	<ul style="list-style-type: none"> <li>• Multiple LEED contributions</li> <li>• Recycling options available</li> </ul>
Dimensions	EXTEND Floor Track <ul style="list-style-type: none"> <li>• Thickness (in) – 2.79 in.</li> <li>• Weight (est. per sq. ft) – 10 lbs.</li> <li>• Max Panel Height (in) – 114 in.</li> <li>• Max Panel Width (in) 19.68 – 47.24 in.</li> <li>• Panel Construction / Frame Aluminum</li> <li>• Max Opening Width in. Adjustable</li> </ul>
Lead Time	<ul style="list-style-type: none"> <li>• Production and delivery customized to align with project schedules</li> <li>• 12-14-week standard lead time</li> </ul>
Finishes	<ul style="list-style-type: none"> <li>• Matte black and white finishes in stock</li> <li>• Custom powder coat and other specialty finishes available</li> </ul>
Glass Joints	<ul style="list-style-type: none"> <li>• Multiple choices including polycarbonate co-extrusions, MetroWall proprietary extruded aluminum mullions with integrated seal and hi-bond tape</li> </ul>
Construction	<ul style="list-style-type: none"> <li>• Architectural-grade aluminum alloys</li> <li>• 100% domestically sourced aluminum and glass</li> <li>• Seamlessly integrates with standard building construction</li> </ul>



Scan to see the  
EXTEND in action






Scan to view our online  
product gallery




## JOIN THE METROWALL COMMUNITY


---

### CONTACT US:

 (888) 798-8806

 [sales@metro-wall.com](mailto:sales@metro-wall.com)

 [metro-wall.com](http://metro-wall.com)

 520 Landmark Drive  
Congers, New York 10920

### FOLLOW US:

 [metrowall](https://www.linkedin.com/company/metrowall)

 [metrowallnyc](https://www.instagram.com/metrowallnyc)

 [metrowall](https://www.facebook.com/metrowall)

 [metrowall](https://www.youtube.com/metrowall)